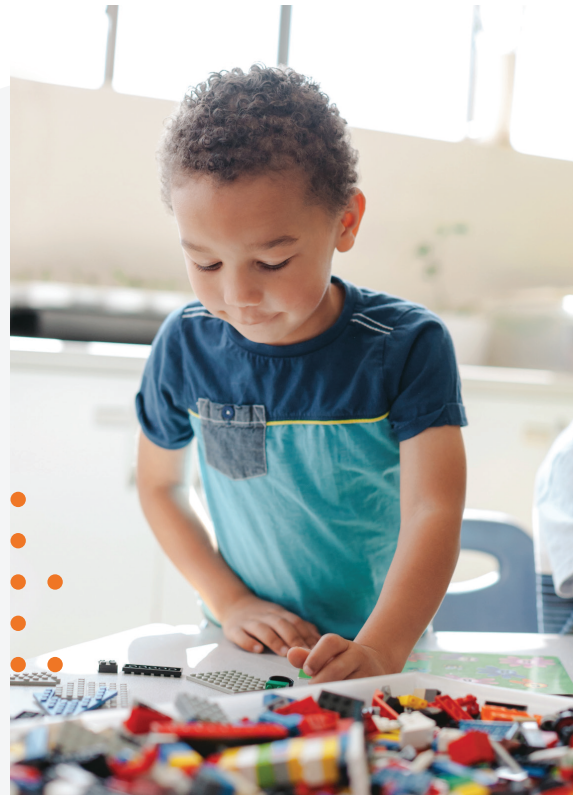




Farmersville Full Day Programs 2023-2024



When?

8:00 a.m. - 5:00 p.m.

November 20th - 22nd

December 27th - 29th

January 2nd - 5th

March 4th - 8th



Snacks

Morning and afternoon snacks will be provided.



Lunch

Please send your child with a sack lunch and water bottle each day.



Location

McClendon Elementary School

601 N Farm To Market 1138

Nevada, TX 75173



Contact

Linda Perrin

lperrin@alphabest.org

(214) 707-9247

For rates and online registration, visit AlphaBEST.org/communitytx

